



**BUILDING CODE COMPLIANCE OFFICE (BCCO)
PRODUCT CONTROL DIVISION**

**MIAMI-DADE COUNTY, FLORIDA
METRO-DADE FLAGLER BUILDING
140 WEST FLAGLER STREET, SUITE 1603
MIAMI, FLORIDA 33130-1563
(305) 375-2901 FAX (305) 372-6339**

NOTICE OF ACCEPTANCE (NOA)

www.miamidade.gov/buildingcode

**Sol-A-Trol Aluminum Products, Inc.
4101 N.W. 132nd Street
Miami, FL 33054**

SCOPE:

This NOA is being issued under the applicable rules and regulations governing the use of construction materials. The documentation submitted has been reviewed by Miami-Dade County Product Control Division and accepted by the Board of Rules and Appeals (BORA) to be used in Miami Dade County and other areas where allowed by the Authority Having Jurisdiction (AHJ).

This NOA shall not be valid after the expiration date stated below. The Miami-Dade County Product Control Division (In Miami Dade County) and/or the AHJ (in areas other than Miami Dade County) reserve the right to have this product or material tested for quality assurance purposes. If this product or material fails to perform in the accepted manner, the manufacturer will incur the expense of such testing and the AHJ may immediately revoke, modify, or suspend the use of such product or material within their jurisdiction. BORA reserves the right to revoke this acceptance, if it is determined by Miami-Dade County Product Control Division that this product or material fails to meet the requirements of the applicable building code. This product is approved as described herein, and has been designed to comply with the Florida Building Code, including the High Velocity Hurricane Zone.

DESCRIPTION: Series "540-H" Aluminum (Project-In) Hopper Window w/Louvers – L.M.I.

APPROVAL DOCUMENT: Drawing No. **W08-96**, titled "S-540H Project-In Wdw. with Louvers (L.M.I.)", sheets 1 through 6 of 6, dated 12/14/08, prepared by Al-Farooq Corporation, signed and sealed by Arshad Viqar, P.E., bearing the Miami-Dade County Product Control approval stamp with the Notice of Acceptance number and approval date by the Miami-Dade County Product Control Division.

MISSILE IMPACT RATING: Large and Small Missile Impact Resistant

LABELING: Each unit shall bear a permanent label with the manufacturer's name or logo, city, state and following statement: "Miami-Dade County Product Control Approved", unless otherwise noted herein.

RENEWAL of this NOA shall be considered after a renewal application has been filed and there has been no change in the applicable building code negatively affecting the performance of this product.

TERMINATION of this NOA will occur after the expiration date or if there has been a revision or change in the materials, use, and/or manufacture of the product or process. Misuse of this NOA as an endorsement of any product, for sales, advertising or any other purposes shall automatically terminate this NOA. Failure to comply with any section of this NOA shall be cause for termination and removal of NOA.

ADVERTISEMENT: The NOA number preceded by the words Miami-Dade County, Florida, and followed by the expiration date may be displayed in advertising literature. If any portion of the NOA is displayed, then it shall be done in its entirety.

INSPECTION: A copy of this entire NOA shall be provided to the user by the manufacturer or its distributors and shall be available for inspection at the job site at the request of the Building Official. This NOA consists of this page 1 and evidence pages E-1, E-2 and E-3, as well as approval document mentioned above.

The submitted documentation was reviewed by **Manuel Perez, P.E.**



**NOA No. 09-1228.06
Expiration Date: April 21, 2015
Approval Date: April 21, 2010
Page 1**

NOTICE OF ACCEPTANCE: EVIDENCE SUBMITTED

A. DRAWINGS

1. Manufacturer's die drawings and sections.
2. Drawing No **W08-96**, Sheets 1 through 6 of 6, titled "S-540H Project-In Wdw. With Louvers (L.M.I.)", dated 12/14/08, prepared by Al-Farooq Corporation, signed and sealed by Arshad Viqar, P.E.

B. TESTS

1. Test reports on: 1) Air Infiltration Test, per FBC, TAS 202-94
2) Uniform Static Air Pressure Test, Loading per FBC TAS 202-94
3) Water Resistance Test, per FBC, TAS 202-94
along with marked-up drawings and installation diagram of an aluminum project-in (hopper) window w/louvers, prepared by Hurricane Engineering & Testing, Inc. Test Report No. **HETI-07-4214**, dated 10/08/07, signed and sealed by Candido F. Font, P.E.
2. Test reports on: 1) Air Infiltration Test, per FBC, TAS 202-94
2) Uniform Static Air Pressure Test, Loading per FBC TAS 202-94
3) Water Resistance Test, per FBC, TAS 202-94
along with marked-up drawings and installation diagram of an aluminum project-in (hopper) window w/louvers, prepared by Hurricane Engineering & Testing, Inc. Test Report No. **HETI-07-4215**, dated 10/08/07, signed and sealed by Candido F. Font, P.E.
3. Test reports on: 1) Air Infiltration Test, per FBC, TAS 202-94
2) Uniform Static Air Pressure Test, Loading per FBC TAS 202-94
3) Water Resistance Test, per FBC, TAS 202-94
along with marked-up drawings and installation diagram of an aluminum project-in (hopper) window w/louvers, prepared by Hurricane Engineering & Testing, Inc. Test Report No. **HETI-07-4216**, dated 10/08/07, signed and sealed by Candido F. Font, P.E.
4. Test reports on: 1) Air Infiltration Test, per FBC, TAS 202-94
2) Uniform Static Air Pressure Test, Loading per FBC TAS 202-94
3) Water Resistance Test, per FBC, TAS 202-94
along with marked-up drawings and installation diagram of an aluminum project-in (hopper) window over a single hung window w/louvers, prepared by Hurricane Engineering & Testing, Inc. Test Report No. **HETI-08-2080**, dated 04/15/08, signed and sealed by Candido F. Font, P.E.
5. Test reports on: 1) Uniform Static Air Pressure Test, Loading per FBC TAS 202-94
along with marked-up drawings and installation diagram of two mulled side-by-side aluminum project-in (hopper) windows w/louvers, prepared by Hurricane Engineering & Testing, Inc. Test Report No. **HETI-07-4217**, dated 10/08/07, signed and sealed by Candido F. Font, P.E.

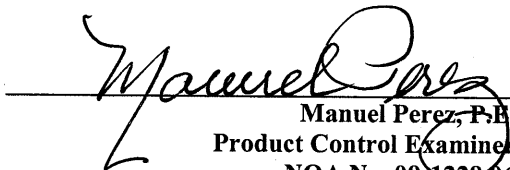

Manuel Perez, P.E.
Product Control Examiner
NOA No. 09-1228.06

Expiration Date: April 21, 2015
Approval Date: April 21, 2010

NOTICE OF ACCEPTANCE: EVIDENCE SUBMITTED

B. TESTS(continued)

6. Test reports on: 1) Large Missile Impact Test per FBC, TAS 201-94
2) Cyclic Wind Pressure Loading per FBC, TAS 203-94
along with marked-up drawings and installation diagram of two mulled side-by-side aluminum project-in (hopper) windows w/louvers, prepared by Hurricane Engineering & Testing, Inc. Test Report No. **HETI-07-4218**, dated 10/08/07, signed and sealed by Candido F. Font, P.E.
7. Test reports on: 1) Uniform Static Air Pressure Test, Loading per FBC TAS 202-94
along with marked-up drawings and installation diagram of two mulled side-by-side aluminum project-in (hopper) windows w/louvers, prepared by Hurricane Engineering & Testing, Inc. Test Report No. **HETI-07-4240**, dated 10/08/07, signed and sealed by Candido F. Font, P.E.
8. Test reports on: 1) Large Missile Impact Test per FBC, TAS 201-94
2) Cyclic Wind Pressure Loading per FBC, TAS 203-94
along with marked-up drawings and installation diagram of two mulled side-by-side aluminum project-in (hopper) windows with louvers, prepared by Hurricane Engineering & Testing, Inc. Test Report No. **HETI-07-4299**, dated 10/08/07, signed and sealed by Candido F. Font, P.E.
9. Test reports on: 1) Uniform Static Air Pressure Test, Loading per FBC TAS 202-94
along with marked-up drawings and installation diagram of a 16-1/2" x 33-3/4" series 540 louver window, prepared by Hurricane Engineering & Testing Inc., Test Report No. **HETI-04-1386C**, dated June 30, 2004, signed and sealed by Rafael E. Droz-Seda, P.E. *(For reference only - Submitted under NOA# 05-0125.02)*
10. Test reports on: 1) Uniform Static Air Pressure Test, Loading per FBC TAS 202-94
along with marked-up drawings and installation diagram of a 32-1/8" x 65-1/8" series 540 louver window, prepared by Hurricane Engineering & Testing Inc., Test Report No. **HETI-04-1386B**, dated June 30, 2004, signed and sealed by Rafael E. Droz-Seda, P.E. *(For reference only - Submitted under NOA# 05-0125.02)*
11. Test reports on: 1) Uniform Static Air Pressure Test, Loading per FBC TAS 202-94
along with marked-up drawings and installation diagram of three 49" x 97-1/2" series 540 louver windows, prepared by Hurricane Engineering & Testing Inc., Test Report No. **HETI-04-1386A**, dated June 02, 2004, signed and sealed by Rafael E. Droz-Seda, P.E. *(For reference only - Submitted under NOA# 05-0125.02)*


Manuel Perez, P.E.
Product Control Examiner
NOA No. 09-1228.06
Expiration Date: April 21, 2015
Approval Date: April 21, 2010

Sol-A-Trol Aluminum Products, Inc.

NOTICE OF ACCEPTANCE: EVIDENCE SUBMITTED

B. TESTS(continued)

12. Test reports on: 1) Air Infiltration Test, per FBC, TAS 202-94
2) Uniform Static Air Pressure Test, Loading per FBC TAS 202-94
3) Water Resistance Test, per FBC, TAS 202-94
4) Large Missile Impact Test per FBC, TAS 201-94
5) Cyclic Wind Pressure Loading per FBC, TAS 203-94
6) Forced Entry Test, per FBC 2411 3.2.1, TAS 202-94

along with marked-up drawings and installation diagram of the series 540 aluminum single/double hung windows w/louvers, prepared by Fenestration Testing Laboratory, Inc., Test Report No. **FTL-3059**, dated August 7, 2001, signed and sealed by Luis Antonio Figueredo, P.E. *(For reference only - Submitted under NOA# 01-1016.04)*

C. CALCULATIONS

1. Anchor verification calculations and structural analysis, complying with FBC-2007, prepared by Al-Farooq Corporation, dated 07/31/09, signed and sealed by Arshad Viqar, P.E.
Complies with ASTM E1300-02/04

D. QUALITY ASSURANCE

1. Miami Dade Building Code Compliance Office (BCCO).

E. MATERIAL CERTIFICATIONS

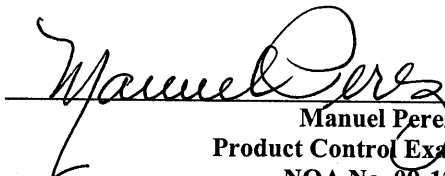
1. None.

F. STATEMENTS

1. Statement letter of conformance and no financial interest, dated July 31, 2009, signed and sealed by Arshad Viqar, P.E.

G. OTHER

1. None.


Manuel Perez, P.E.
Product Control Examiner
NOA No. 09-1228.06
Expiration Date: April 21, 2015
Approval Date: April 21, 2010

SERIES-540H

ALUMINUM PROJECT-IN WINDOW WITH LOUVERS

APPROVAL APPLIES TO SINGLE UNITS OR SIDE BY SIDE COMBINATIONS OF PROJECTED/PROJECTED OR PROJECTED WDW. WITH OTHER WINDOW TYPES IN MODULES OF TWO OR MORE WINDOWS USING MIAMI-DADE COUNTY APPROVED MULLIONS IN BETWEEN. LOWER DESIGN PRESSURE FROM WINDOWS OR MULLION APPROVAL WILL APPLY TO ENTIRE SYSTEM.

THIS PRODUCT HAS BEEN DESIGNED AND TESTED TO COMPLY WITH THE REQUIREMENTS OF THE FLORIDA BUILDING CODE 2007 EDITION INCLUDING HIGH VELOCITY HURRICANE ZONE (HVHZ).

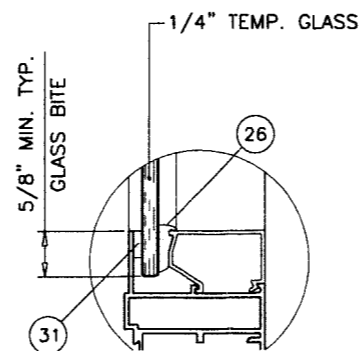
WOOD BUCKS BY OTHERS, MUST BE ANCHORED PROPERLY TO TRANSFER LOADS TO THE STRUCTURE.

ANCHORS SHALL BE AS LISTED, SPACED AS SHOWN ON DETAILS, ANCHORS EMBEDMENT TO BASE MATERIAL SHALL BE BEYOND WALL DRESSING OR STUCCO.

ANCHORING OR LOADING CONDITIONS NOT SHOWN IN THESE DETAILS ARE NOT PART OF THIS APPROVAL.

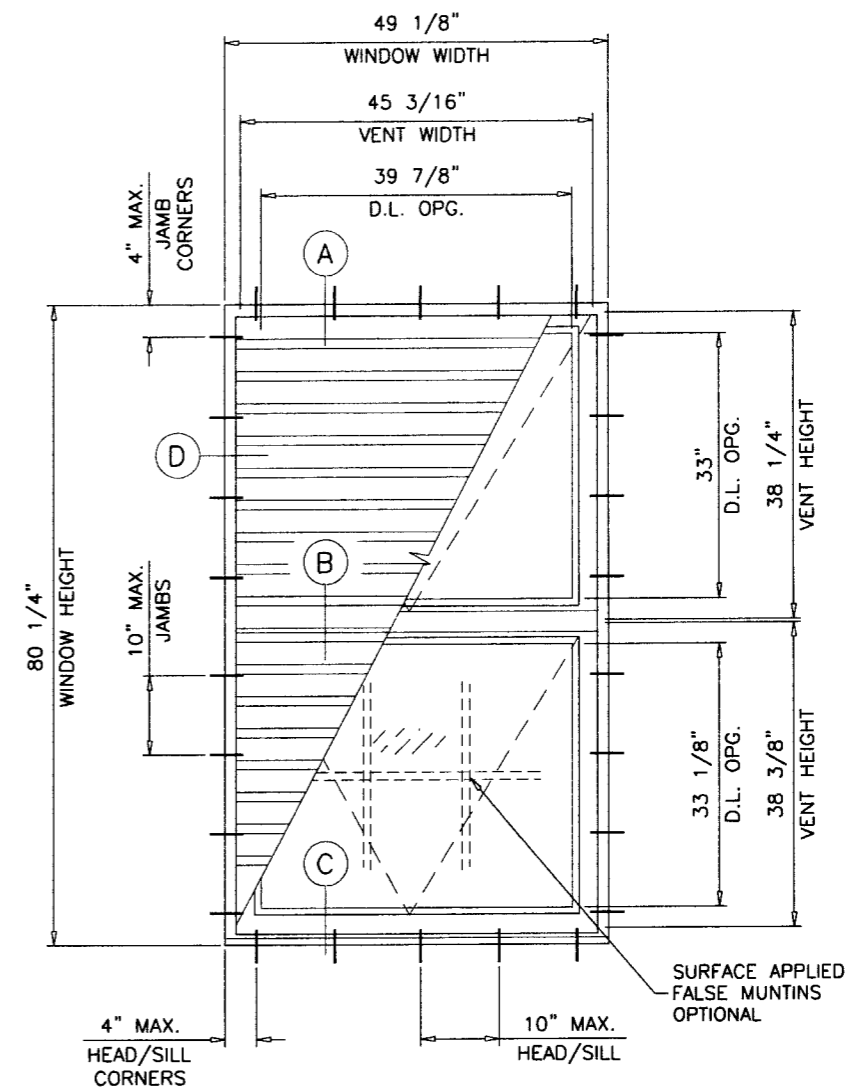
A LOAD DURATION INCREASE IS USED IN DESIGN OF ANCHORS INTO WOOD ONLY.

MATERIALS INCLUDING BUT NOT LIMITED TO STEEL/METAL SCREWS, THAT COME INTO CONTACT WITH OTHER DISSIMILAR MATERIALS SHALL MEET THE REQUIREMENTS OF 2007 FLORIDA BLDG. CODE SECTION 2003.8.4.



GLAZING DETAIL

NOTE:
GLASS CAPACITIES ARE
BASED ON ASTM E1300-02/04 (3 SEC. GUSTS)
AND FLORIDA BUILDING COMMISSION
DECLARATORY STATEMENT DCA05-DEC-219



MAXIMUM DESIGN LOAD RATING = + 75.0 PSF
(FOR SIZES SHOWN ABOVE OR SMALLER) - 75.0 PSF

THESE WINDOWS ARE RATED FOR LARGE & SMALL MISSILE IMPACT.
SHUTTERS ARE NOT REQUIRED.

LOUVER BLADES MAX. LENGTH = 46 INCHES

Engr: ARSHAD VIQAR
CIVIL
FLA. PE # 38863
C.A.N. 3538

DEC 04 2009

Approved as complying with the
Florida Building Code
Date: APRIL 21, 2010
NOAH 09-1228.06
Miami Dade Product Control
By: Manuel Perez

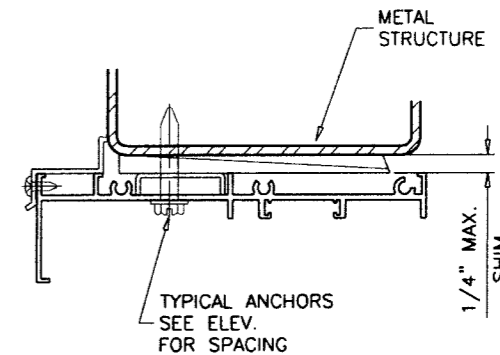
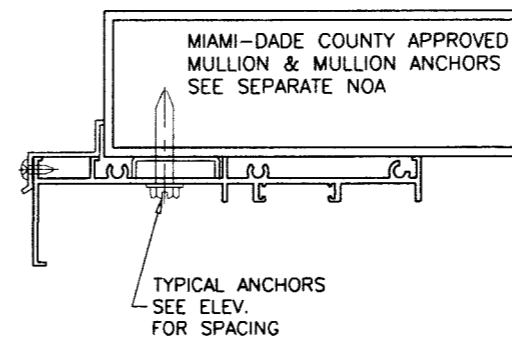
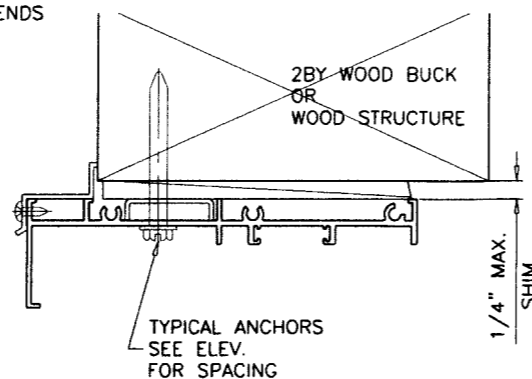
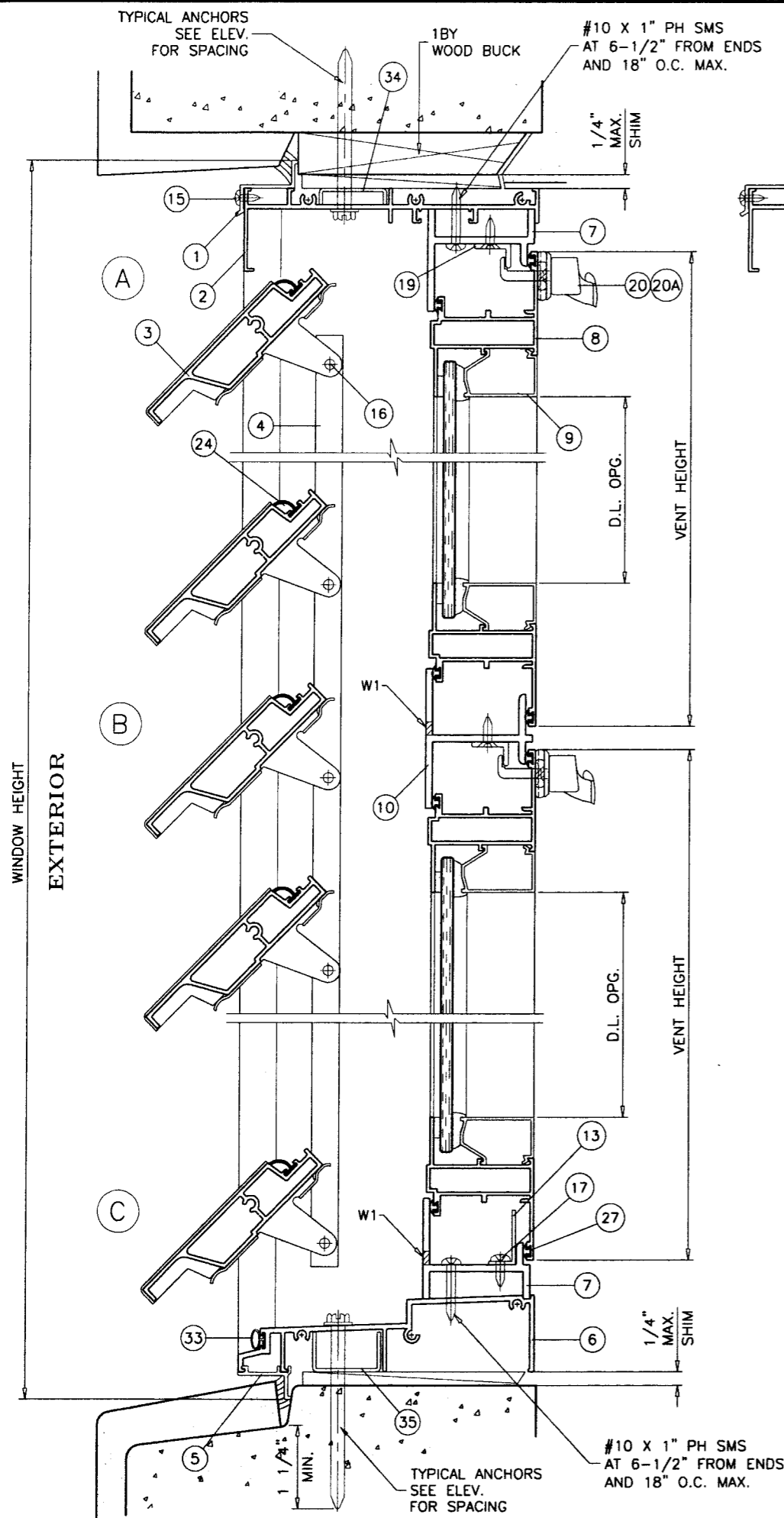
af c
AL-FAROOQ CORPORATION
ENGINEERS & PRODUCT DEVELOPMENT
1235 S.W. 87 AVE
MIAMI, FLORIDA 33174
TEL. (305) 264-8100 FAX. (305) 262-6978
COMP - ANL \ W08 - 96SAT

S-540H PROJECT-IN WDW. WITH LOUVERS (L.M.I.)
SOL-A-TROL ALUMINUM PRODUCTS
4101 N.W. 132ND STREET
MIAMI, FL. 33054
TEL. (305) 681-2020 FAX. (305) 681-2035

revisions:	no	date	by	description

date: 12-14-08
scale: 1/2"=1'-0"
dr. by: HAMID
chk. by:

drawing no.
W08-96
sheet 1 of 6



WOOD BUCKS AND METAL STRUCTURE NOT BY SOL-A-TROL MUST SUSTAIN LOADS IMPOSED BY GLAZING SYSTEM AND TRANSFER THEM TO THE BUILDING STRUCTURE.

TYPICAL ANCHORS: SEE ELEV. FOR SPACING

1/4" DIA. ULTRACON BY 'ELCO' ($F_u=177$ KSI, $F_y=155$ KSI)

INTO 2BY WOOD BUCKS OR WOOD STRUCTURES
1-3/8" MIN. PENETRATION INTO WOOD

THRU 1BY BUCKS INTO CONC. OR MASONRY
1-1/4" MIN. EMBED INTO CONC. OR MASONRY

DIRECTLY INTO CONC. OR MASONRY
1-1/4" MIN. EMBED INTO CONC. OR MASONRY

#14 SMS OR SELF DRILLING SCREWS (GRADE 2 CRS)

INTO METAL STRUCTURES

STEEL : 12 GA. MIN. ($F_y = 36$ KSI MIN.)

ALUMINUM : 1/8" THK. MIN. (6063-T5 MIN.)

(STEEL IN CONTACT WITH ALUMINUM TO BE PLATED OR PAINTED)

#12 SMS OR SELF DRILLING SCREWS (GRADE 2 CRS)

INTO MIAMI-DADE COUNTY APPROVED MULLIONS (MIN. THK. = .090")
(NO SHIM SPACE)

TYPICAL EDGE DISTANCE

INTO CONCRETE AND MASONRY = 2-1/2" MIN.

INTO WOOD STRUCTURE = 1" MIN.

INTO METAL STRUCTURE = 3/4" MIN.

CONCRETE AT HEAD, SILL OR JAMBS $f'_c = 3000$ PSI MIN.

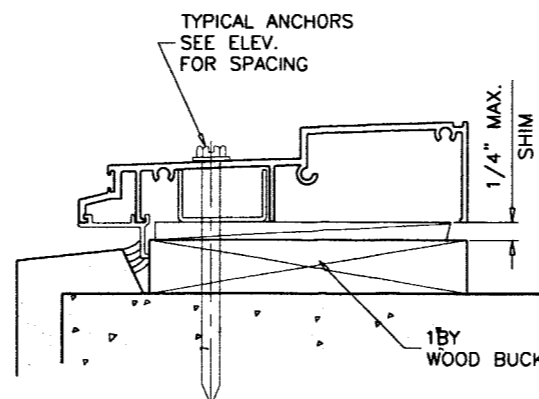
C-90 HOLLOW/FILLED BLOCK AT JAMBS $f'_m = 2000$ PSI MIN.

SEALANTS:

FRAME AND VENT CORNERS AND INSTALLATION SCREWS AT SILL
SEALED WITH WHITE/ALUMINUM COLORED SEALANT.

WEEPHOLES:

W1 = 3/8"W X 1/4"H WEEPHOLES AT 7-1/4" FROM EACH END



Engr: ARSHAD VIQAR
CIVIL
FLA. PE # 38863
C.A.N. 3538

DEC 04 2009

Approved as complying with the
Florida Building Code
Date: APRIL 21, 2010
NOA# 09-1228.06
Miami Dade Product Control
Division
By: *Manuel Perez*

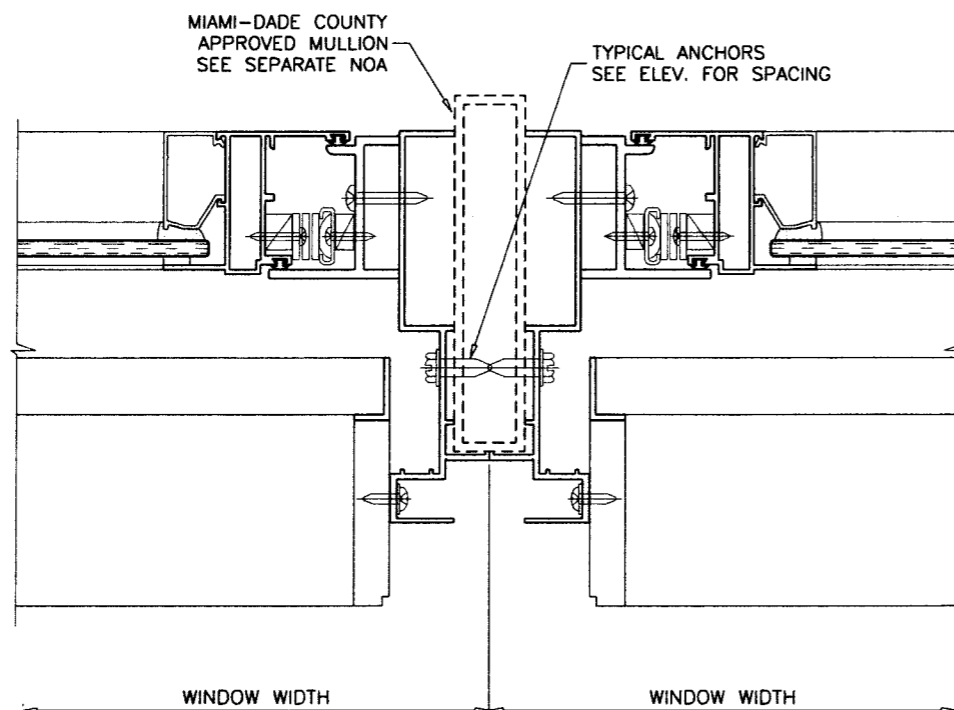
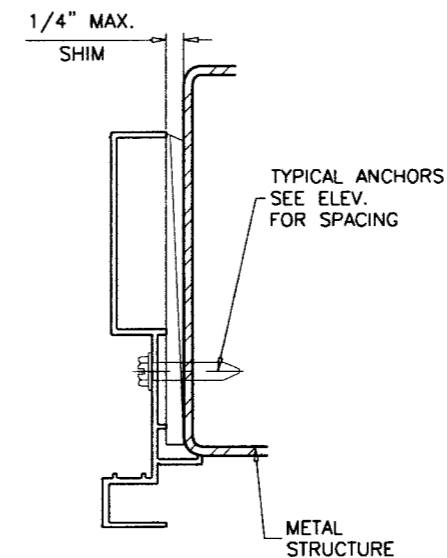
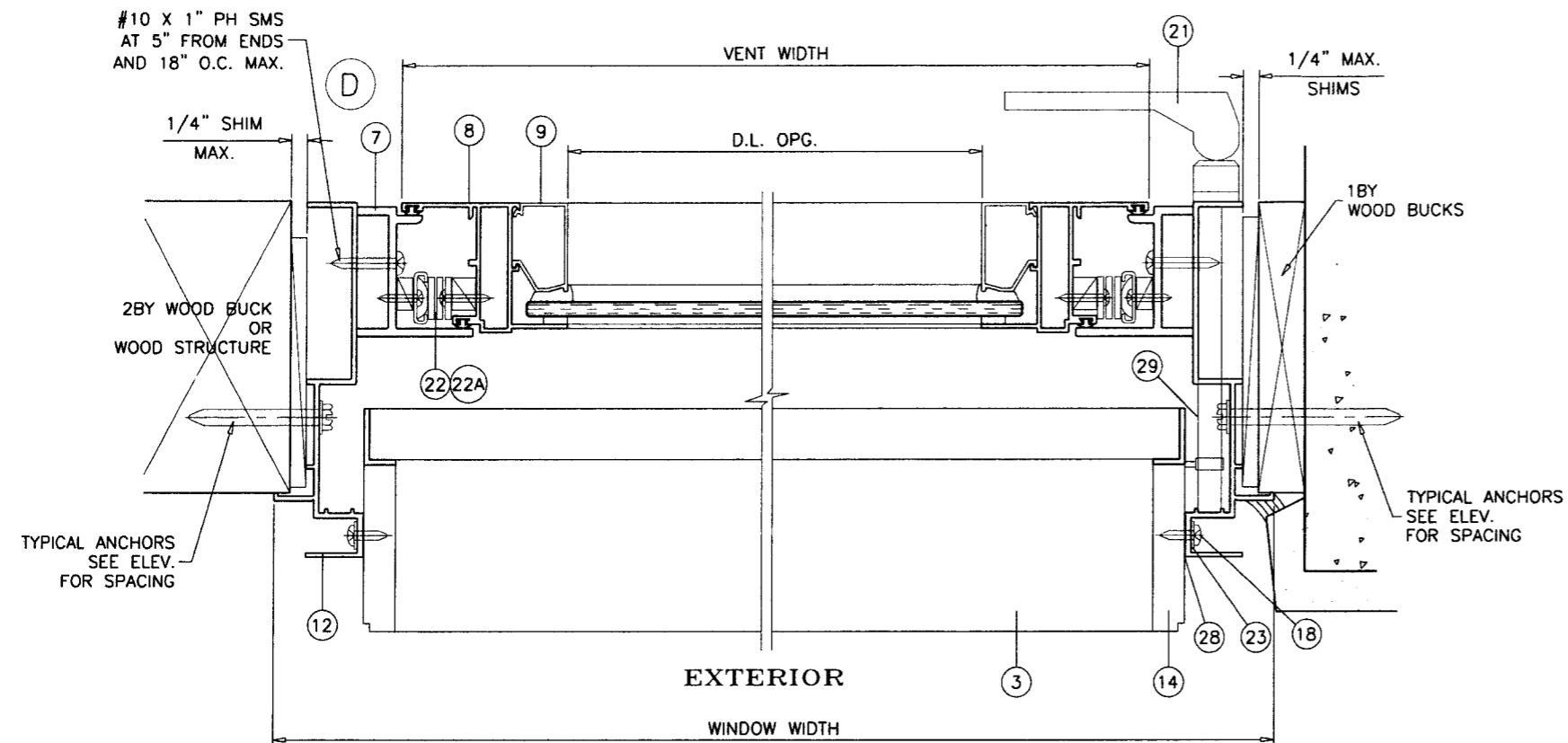
AL-FAROOQ CORPORATION
ENGINEERS & PRODUCT DEVELOPMENT
1235 S.W. 87 AVE
MIAMI, FLORIDA 33174
TEL. (305) 264-8100 FAX. (305) 262-6978

S-540H PROJECT-IN WDW. WITH LOUVERS (L.M.I.)
SOL-A-TROL ALUMINUM PRODUCTS
4101 N.W. 132ND STREET
MIAMI, FL. 33054
TEL. (305) 681-2020 FAX. (305) 681-2035

revisions:	no	date	by	description

date: 12-14-08	scale: 3/8" = 1"
dr. by: HAMID	chk. by:

drawing no.
W08-96
sheet 2 of 6



Engr: ARSHAD VIQAR
CIVIL
FLA. PE # 38863
C.A.N. 3538

DEC 04 2009

Approved as complying with the
Florida Building Code
Date APRIL 21, 2010
NOA# 09-1228-06
Miami Dade Product Control
Division
By Manuel Perez

af c
AL-FAROOQ CORPORATION
ENGINEERS & PRODUCT DEVELOPMENT
1235 S.W. 87 AVE
MIAMI, FLORIDA 33174
TEL. (305) 264-8100 FAX. (305) 262-6978
COMP - ANL \ W08 - 96SAT

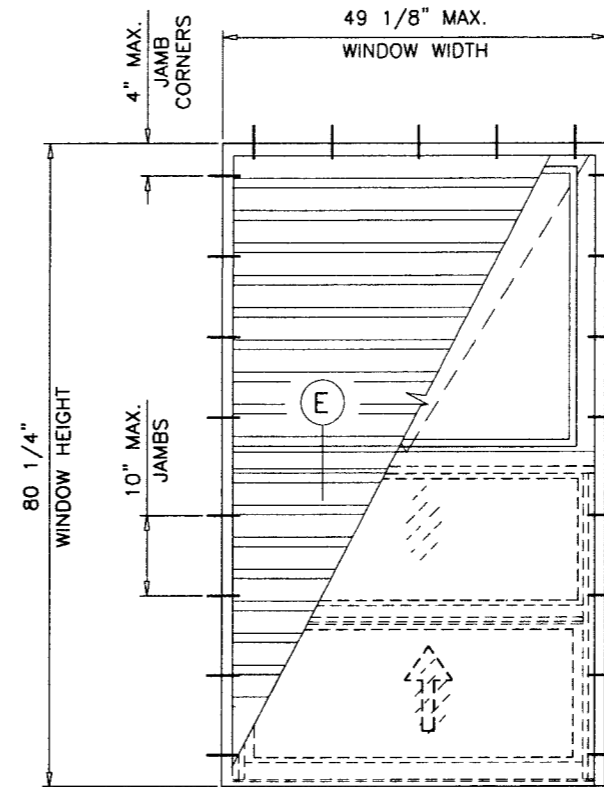
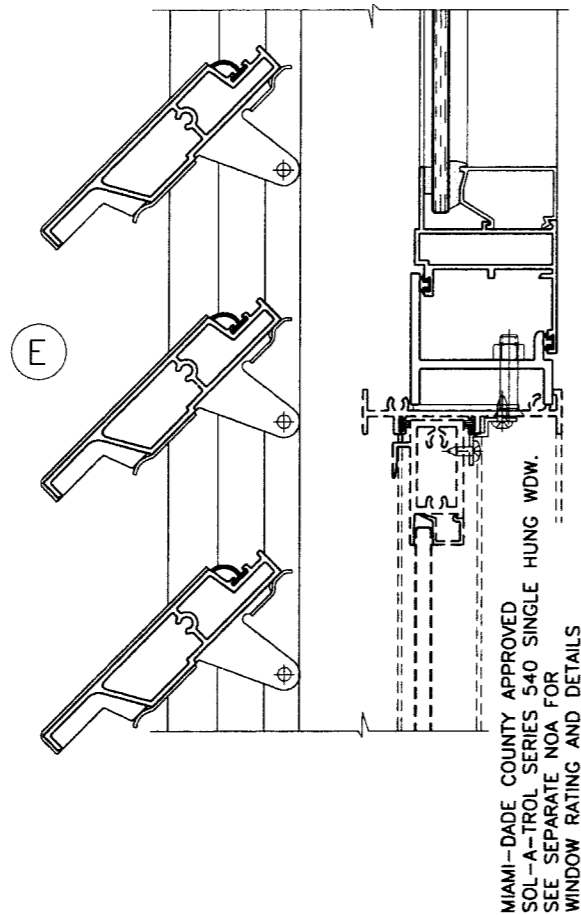
S-540H PROJECT-IN WDW. WITH LOUVERS (L.M.I.)
SOL-A-TROL ALUMINUM PRODUCTS
4101 N.W. 132ND STREET
MIAMI, FL. 33054
TEL. (305) 681-2020 FAX. (305) 681-2035

revisions:	no	date	by	description

date: 12-14-08	scale: 3/8" = 1"	dr. by: HAMID	chk. by:
----------------	------------------	---------------	----------

drawing no.
W08-96

sheet 3 of 6



PROJECT-IN/SINGLE HUNG
WINDOWS WITH LOUVERS

LIMIT MAXIMUM DESIGN LOADS TO ± 70.0 PSF FOR PROJECT-IN/SINGLE HUNG COMBINATIONS
LOUVER BLADES MAX. LENGTH = 46 INCHES

Engr: ARSHAD VIQAR
CIVIL
FLA. PE # 38863
C.A.N. 3538

DEC 04 2009

Approved as complying with the
Florida Building Code
Date: APRIL 21 2010
NOA# 09-1228-06
Miami Dade Product Control
By: *Manuel Perez*

AL-FAROOQ CORPORATION
ENGINEERS & PRODUCT DEVELOPMENT
12335 S.W. 87 AVE
MIAMI, FLORIDA 33174
TEL. (305) 264-8100 FAX. (305) 262-6978

af c
COMP - ANL \ W08 - 96SAT

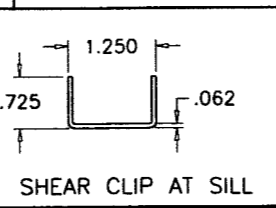
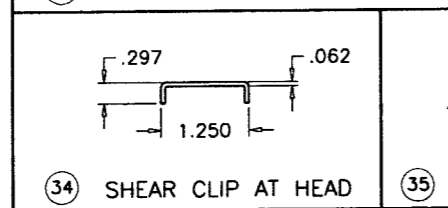
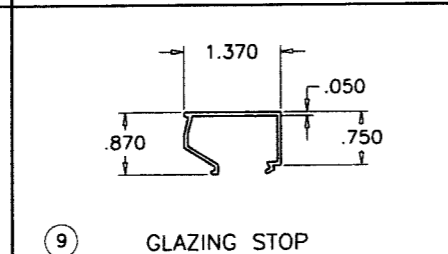
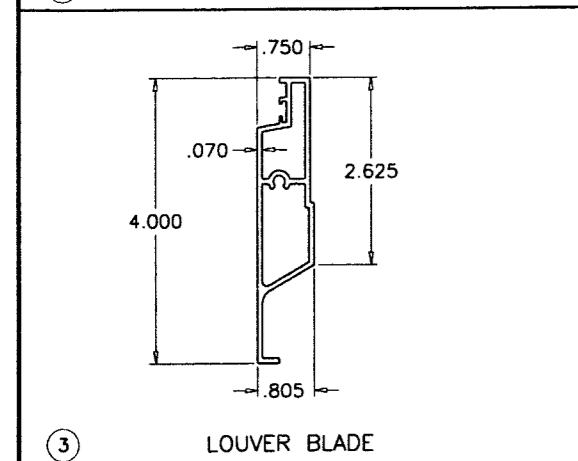
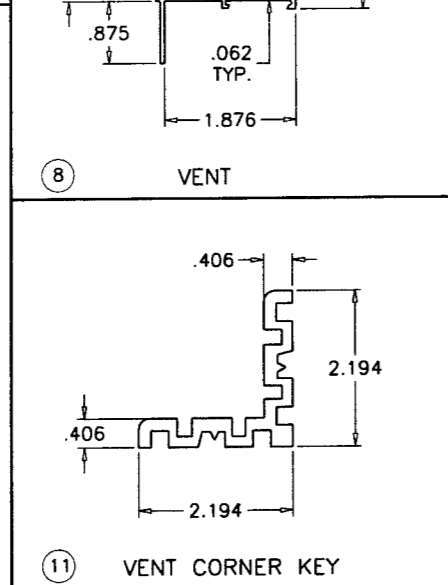
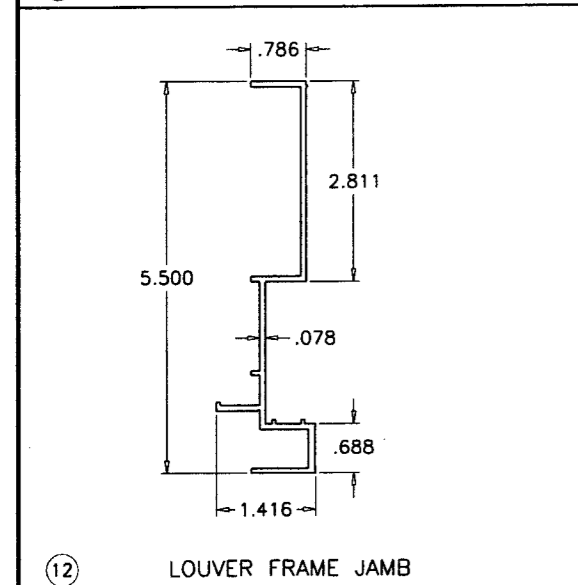
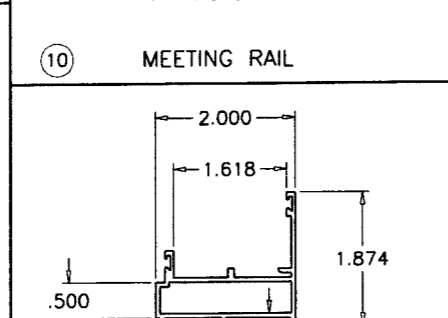
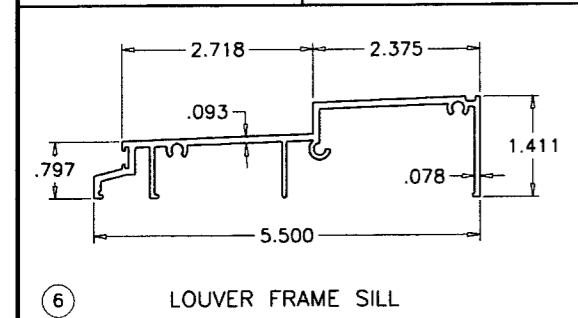
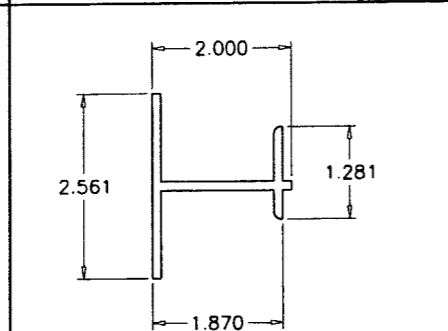
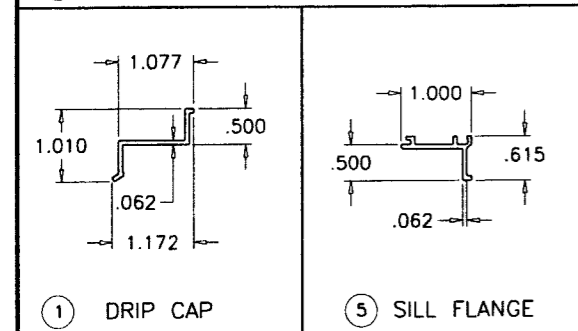
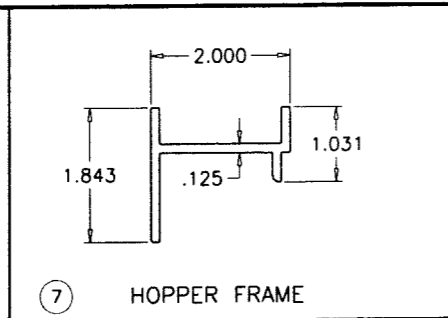
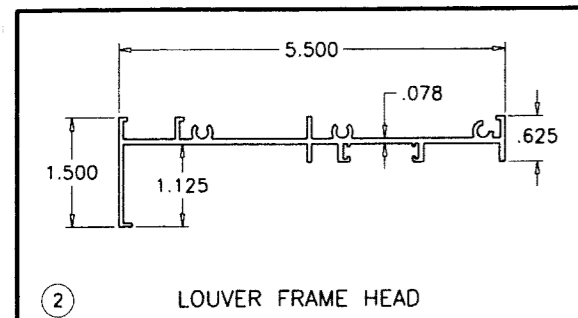
S-540H PROJECT-IN WDW. WITH LOUVERS (L.M.I.)

SOL-A-TROL ALUMINUM PRODUCTS
4101 N.W. 132ND STREET
MIAMI, FL. 33054
TEL. (305) 681-2020 FAX. (305) 681-2035

revisions:	
no	date by description

date: 12-14-08
scale: 3/8" = 1"
dr. by: HAMID
chk. by:

drawing no.
W08-96
sheet 4 of 6



ITEM	PART #	QUANTITY	DESCRIPTION	MATERIAL	MANF./SUPPLIER/REMARKS
1	ARSO-8	1	DRIP CAP	6063-T5	-
2	ARSO-3	1	LOUVER FRAME HEAD	6063-T5	-
3	ARSO-69	AS REQD.	LOUVER BLADE	6063-T6	-
4	ARSO-51	2/ WDW.	TRAVEL BAR	6063-T5	-
5	ARSO-7	1	SILL FLANGE	6063-T5	-
6	ARSO-66	1	LOUVER SILL	6063-T5	-
7	ARSO-112	4/ WDW.	HOPPER FRAME	6063-T5	-
8	ARSO-176	4/ VENT	VENT FRAME	6063-T5	-
9	ARSO-187	4/ VENT	GLAZING BEAD	6063-T5	-
10	ARSO-129R	1	MEETING RAIL	6063-T5	-
11	ARSO-173	1/ CORNER	VENT CORNER KEY	6063-T5	-
12	ARSO-52	2/ WDW.	LOUVER JAMB	6063-T5	-
13	-	1	ALUMINUM ANGLE	6063-T5	1/2 X 1 X 1/16"
14	393	2/ BLADE	LOUVER BLADE CLIP	ALUM 5005	-
15	#6 X 3/8"	AS REQD.	DRIP CAP SCREWS, AT 6-1/2" FROM ENDS	ST. STEEL	PH SMS
16	3/16" DIA.	-	TUBULAR RIVET	ALUMINUM	-
17	#10 X 3/8"	AS REQD.	SILL ANGLE SCREWS, AT 5" FROM ENDS & 10" O.C. MAX.	ST. STEEL	PH MS
18	#10 X 1-1/2"	AS REQD.	LOUVER INSTALLATION FASTENERS	ST. STEEL	SMS
19	#847	1/ VENT	KEEPER	WHITE BRONZE	FASTENED W/ (2) #10 X 3/8" SMS
20	#4907/4908	1/ VENT	CAM LOCKS, AT 5-1/2" FROM ENDS	WHITE BRONZE	-
20A	#10 X 3/8"	2/ LOCK	LOCK INSTALLATION SCREWS	ST. STEEL	FH SMS
21	#149-003	2	LOUVER HANDLE	WHITE BRONZE	-
22	SS-300	2/ VENT	4-BAR HINGE	ST. STEEL	-
22A	#10 X 3/4"	4/ HINGE	HINGE INSTALLATION SCREWS	ST. STEEL	PH SMS
23	001-292-A-1	AS REQD.	BUSHING	VINYL	-
24	326-FP-61-SB	-	BLADE WEATHERSTRIPPING	VINYL	-
25	-	AS REQD.	GLAZING TAPE	POLYFOAM	1/8" X 3/8"
26	FP-40	AS REQD.	GLAZING WEDGE	VINYL	-
27	FP-216-S	AS REQD.	WEATHERSTRIPPING	VINYL	-
28	301-COIL	-	WEATHERSTRIPPING	ST. STEEL	-
29	#313	-	5/16" HEX ROD	2024-T4	-
30	#1580	-	SPOOL ARM	-	-
31	-	AS REQD.	1/8" X 3/8 GLAZING TAPE	FOAM	POLY FOAM
32	#10 X 1"	-	FRAME ASSEMBLY SCREWS	ST. STEEL	PH SMS
33	FP-86S	AS REQD.	LOUVER SILL WEATHERSTRIPPING	-	PROTOTYPE
34	-	AS REQD.	SHEAR CLIP AT HEAD, 3" LONG	3003-H14	AT ANCHOR LOCATIONS
35	-	AS REQD.	SHEAR CLIP AT SILL, 3" LONG	3003-H14	AT ANCHOR LOCATIONS

Engr: ARSHAD VIQAR
CIVIL
FLA. PE # 38863
C.A.N. 3538

DEC 04 2009

Approved as complying with the
Florida Building Code
Date: APRIL 21, 2010
By: Manuel J. J. J.

AL-FAROOQ CORPORATION
ENGINEERS & PRODUCT DEVELOPMENT
1235 S.W. 87 AVE
MIAMI, FLORIDA 33174
TEL. (305) 264-8100 FAX. (305) 262-6978
COMP-ANL\W08-96SAT

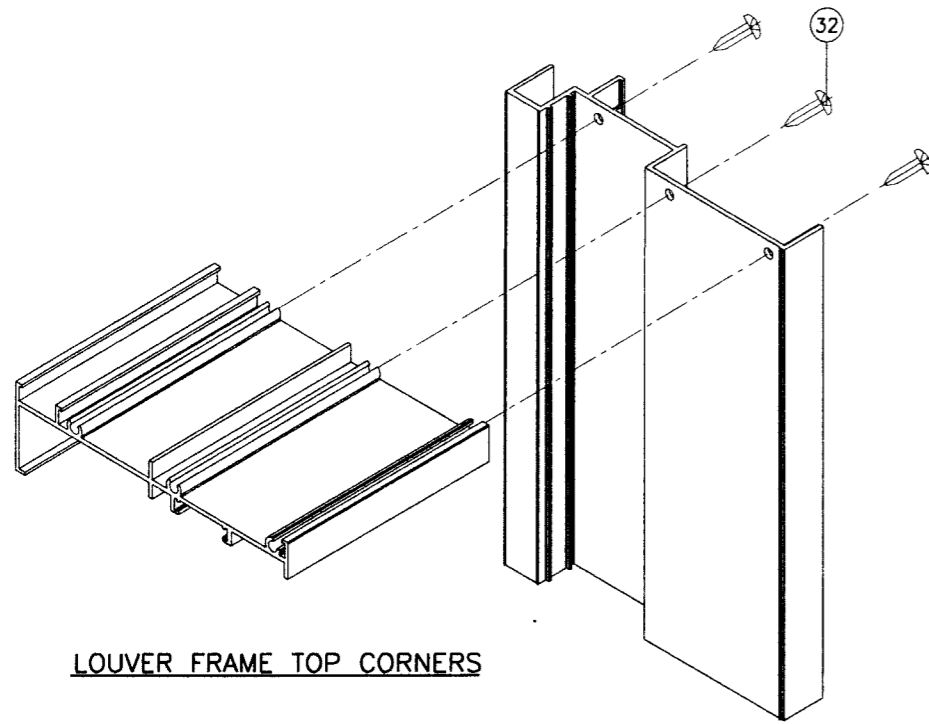
S-540H PROJECT-IN WDW. WITH LOUVERS (L.M.I.)

SOL-A-TROL ALUMINUM PRODUCTS
4101 N.W. 132ND STREET
MIAMI, FL. 33054
TEL. (305) 681-2020 FAX. (305) 681-2035

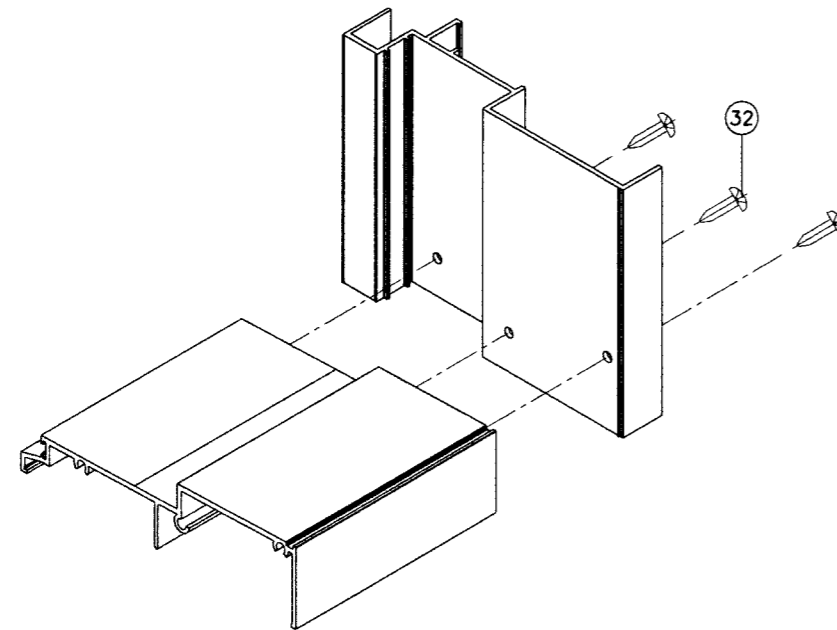
revisions:
no. date by description

date: 12-14-08
scale: 3/8" = 1"
dr. by: HAMID
chk. by:

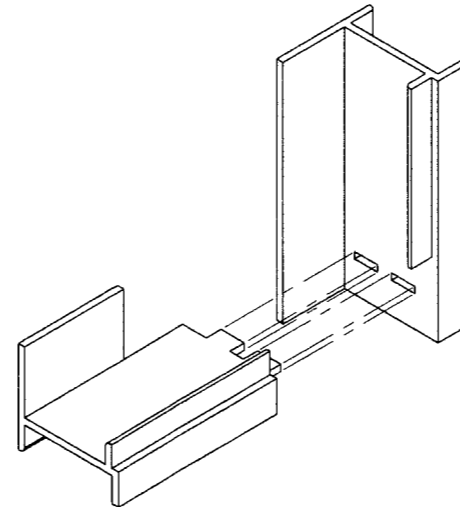
drawing no.
W08-96
sheet 5 of 6



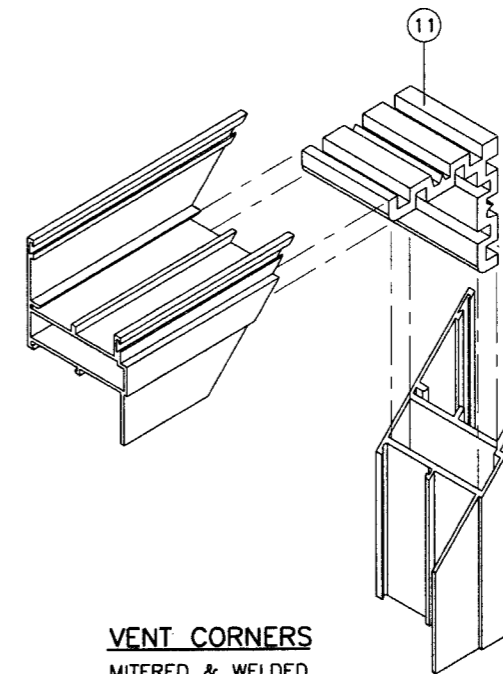
LOUVER FRAME TOP CORNERS



LOUVER FRAME BOTTOM CORNERS



HOPPER FRAME CORNERS
STAKED MORTISE AND TENON FABRICATION



VENT CORNERS
MITERED & WELDED

Engr: ARSHAD VIGAR
CIVIL
FLA. PE # 38863
C.A.N. 3538

Ar

DEC 04 2009

Approved as complying with the
Florida Building Code
Date: APRIL 21, 2010
NOAR 09-1228-06
Miami Dade Product Control
By: *Manuel Perez*

AL-FAROOQ CORPORATION
ENGINEERS & PRODUCT DEVELOPMENT
1235 S.W. 87 AVE
MIAMI, FLORIDA 33174
TEL. (305) 264-8100 FAX. (305) 262-6978

COMP - ANL \ W08 - 96SAT

S-540H PROJECT-IN WDW. WITH LOUVERS (L.M.I.)

COMP - ANL \ W08 - 96SAT

SOL-A-TROL ALUMINUM PRODUCTS
4101 N.W. 132ND STREET
MIAMI, FL. 33054
TEL. (305) 681-2020 FAX. (305) 681-2035

COMP - ANL \ W08 - 96SAT

revisions:	
no	date by description

date: 12-14-08
scale: 3/8" = 1"
dr. by: HAMID
chk. by:

drawing no.
W08-96
sheet 6 of 6

date: 12-14-08
scale: 3/8" = 1"
dr. by: HAMID
chk. by:

drawing no.
W08-96
sheet 6 of 6